

YG-DCO-014-C

Yorkshire Green Energy Enablement (GREEN) Project

Volume 2

Document 2.7.4 Access, Rights of Way and Public Rights of
Navigation Plan Section D

Final Issue A

November 2022

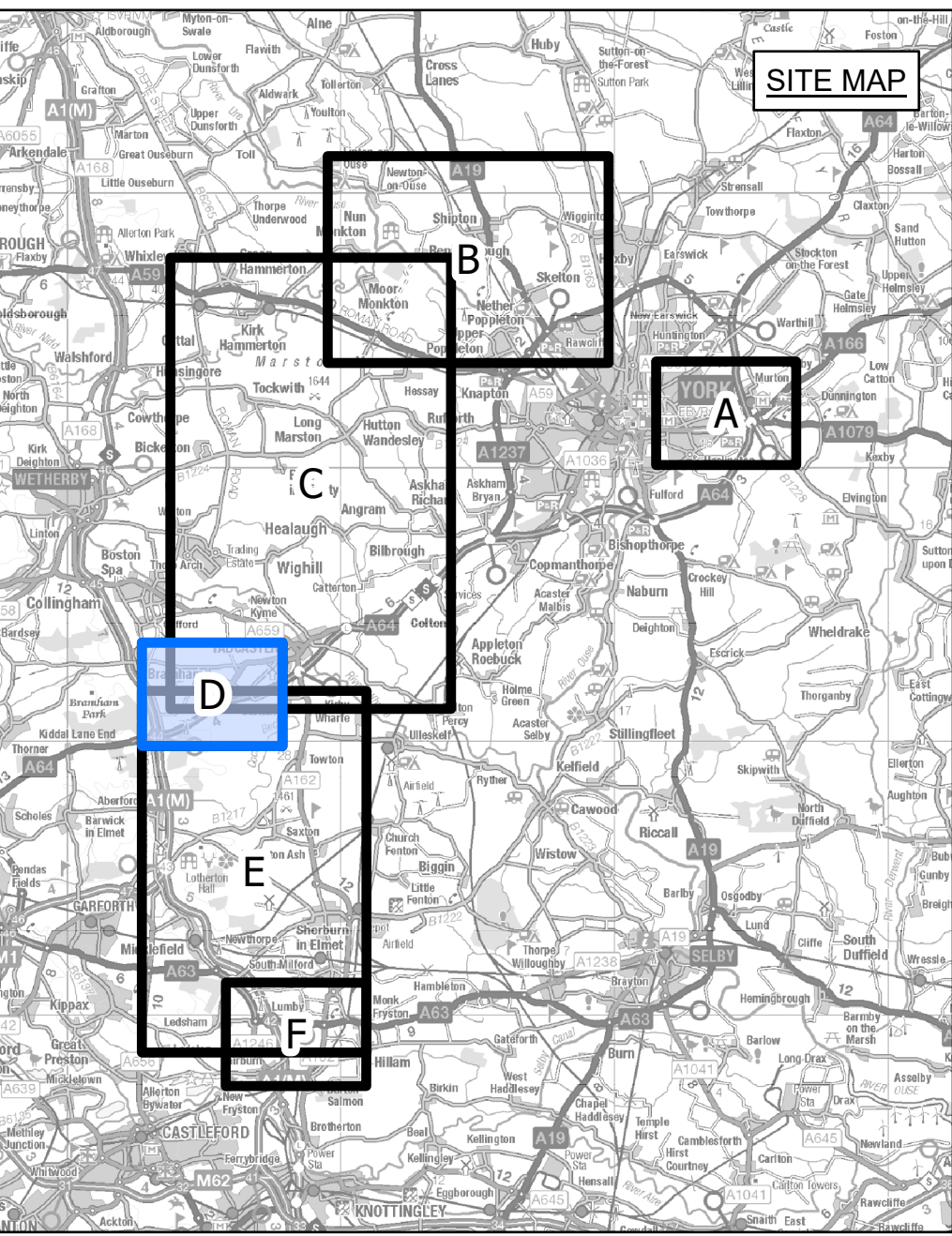
Planning Inspectorate Reference: EN020024

Infrastructure Planning (Applications: Prescribed Forms and
Procedure) Regulations 2009 Regulation 5(2)(k)

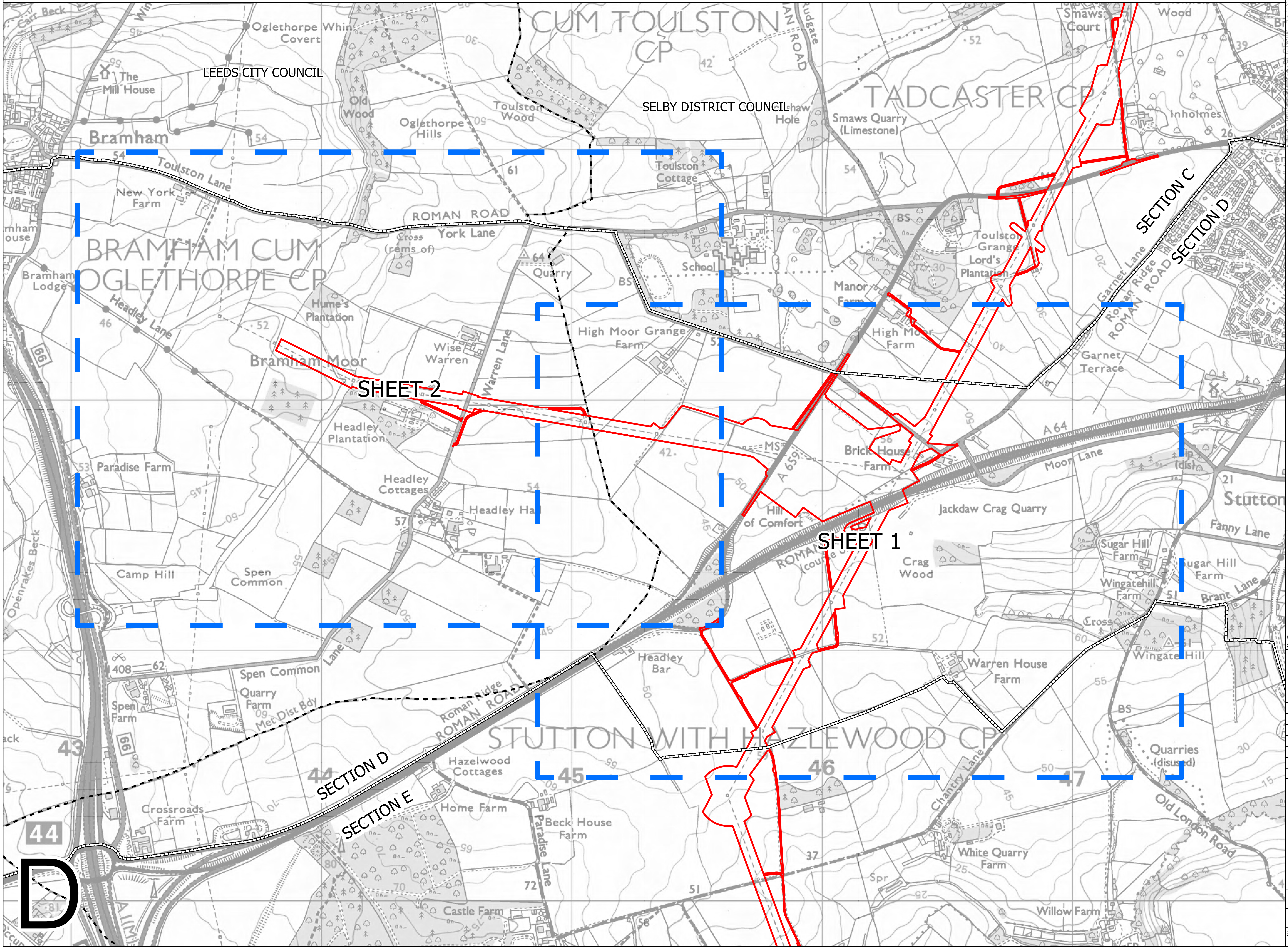
nationalgrid



NATIONAL GRID (YORKSHIRE GREEN ENERGY ENABLEMENT PROJECT) ORDER
ACCESS, RIGHTS OF WAY AND PUBLIC RIGHTS OF NAVIGATION KEY PLAN
REGULATION 5(2)(K)
SECTION D, SHEET 1 OF 1



- LEGEND**
- LOCAL AUTHORITY BOUNDARY
 - - - SECTION BOUNDARY
 - ORDER LIMITS
 - SHEET INDEX



Notes

This drawing is scaled at paper size A0, therefore any prints taken at smaller sizes will affect accuracy of the measurement units and should not be scaled against.

For additional detail on the plan suites, please refer to Document 2.3 Plan Guidance Document, located in Volume 2 of the DCO Application.

The local authorities' boundaries and titles are correct at the time of submission. North Yorkshire County Council and its 7 districts are expected to form a new single council (North Yorkshire Council) on 1 April 2023.

Coordinate System: British National Grid
Sheet X Centroid Coordinate: 441703 Sheet Y Centroid Coordinate: 445290

BACKGROUND MAPPING INFORMATION HAS BEEN REPRODUCED FROM THE ORDNANCE SURVEY BY PERMISSION OF ORDNANCE SURVEY OF THE CONTROLLER OF HER MAJESTY'S STATIONERY OFFICE. CROWN COPYRIGHT ORDNANCE SURVEY ©. BLUESKY INTERNATIONAL LTD ©. NATIONAL GRID ELECTRICITY - 100024241.

Issue	Date	Remarks	Drawn	Checked	Approved
A	01/11/2022	FOR DCO SUBMISSION	JDH	SF	EMD

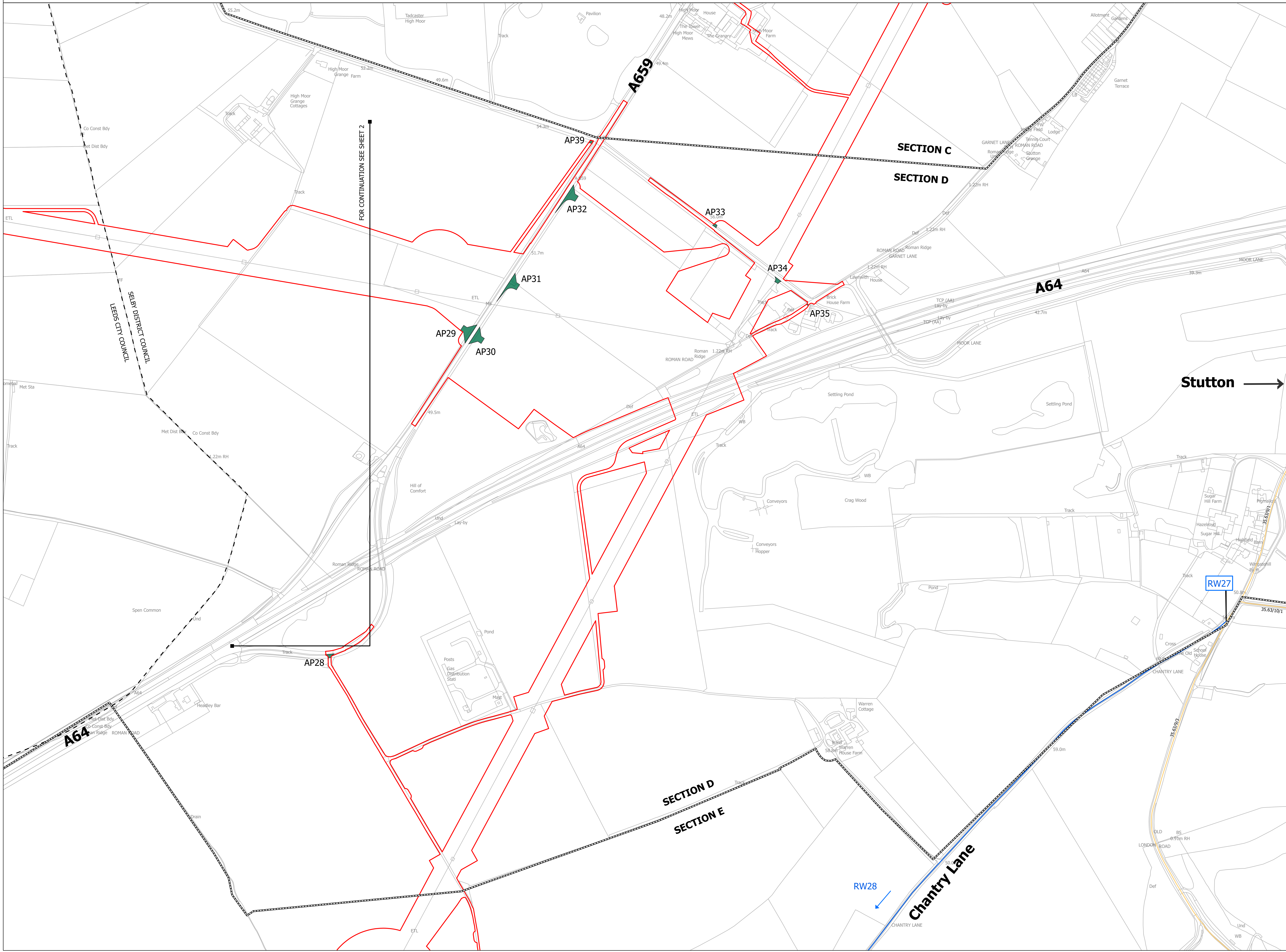
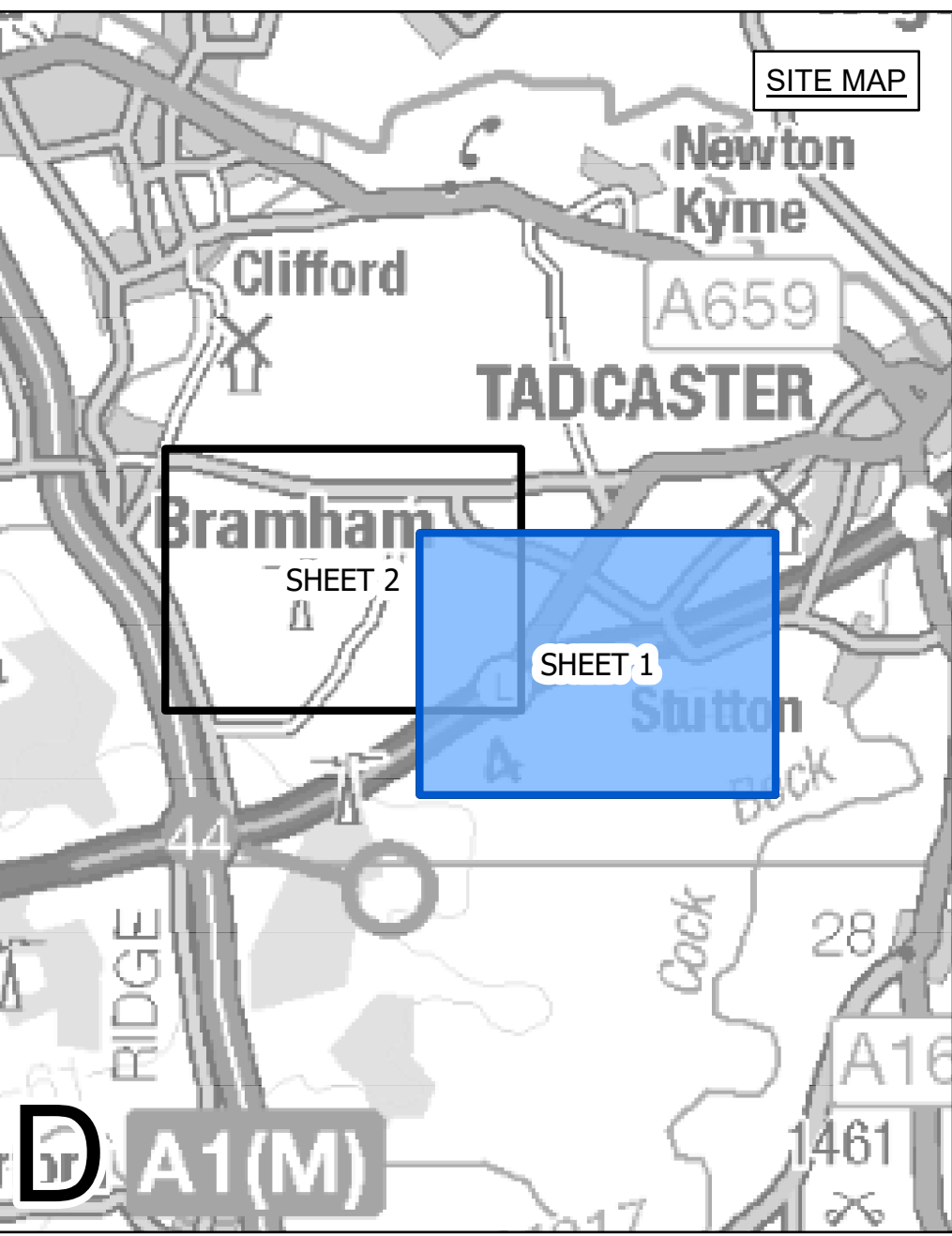
Title

NATIONAL GRID (YORKSHIRE GREEN ENERGY ENABLEMENT PROJECT) ORDER ACCESS, RIGHTS OF WAY AND PUBLIC RIGHTS OF NAVIGATION KEY PLAN REGULATION 5(2)(K) SECTION D, SHEET 1 OF 1

Application Number		EN020024	
National Grid Drawing Reference		DCO_D/AC/KP/01	
Scale	Sheet Size	Sheet	Issue
1:5,000	A0	SHEET 1 OF 1	A



NATIONAL GRID (YORKSHIRE GREEN ENERGY ENABLEMENT PROJECT) ORDER
ACCESS, RIGHTS OF WAY AND PUBLIC RIGHTS OF NAVIGATION PLAN
REGULATION 5(2)(K)
SECTION D, SHEET 1 OF 2



- LEGEND**
- LOCAL AUTHORITY BOUNDARY
 - - - SECTION BOUNDARY
 - ▭ ORDER LIMITS
 - ▭ ACCESS POINT (WITH ACCOMPANYING ID REFERENCE E.G. AP1)
 - ▭ NATIONAL CYCLE NETWORK (WITH ACCOMPANYING ID REFERENCE E.G. NCN 15)
 - ▭ PUBLIC RIGHTS OF WAY MANAGEMENT
 - ▭ UNAFFECTED PUBLIC RIGHT OF WAY (WITH FOOTPATH REFERENCE E.G. 10.123/1/2)
 - ▭ TEMPORARY STOPPED UP (MANAGED)
 - ▭ EXAMPLE REFERENCE FOR TEMPORARY STOPPED UP (MANAGED) SECTION OF RIGHT OF WAY

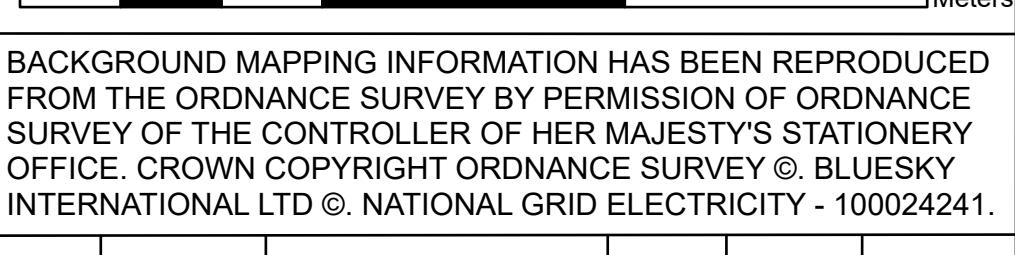
Notes

This drawing is scaled at paper size A0, therefore any prints taken at smaller sizes will affect accuracy of the measurement units and should not be scaled against.

For additional detail on the plan suites, please refer to Document 2.3 Plan Guidance Document, located in Volume 2 of the DCO Application.

The local authorities' boundaries and titles are correct at the time of submission. North Yorkshire County Council and its 7 districts are expected to form a new single council (North Yorkshire Council) on 1 April 2023.

Coordinate System: British National Grid
Sheet X Centroid Coordinate: 441438 Sheet Y Centroid Coordinate: 446149



BACKGROUND MAPPING INFORMATION HAS BEEN REPRODUCED FROM THE ORDNANCE SURVEY BY PERMISSION OF ORDNANCE SURVEY OF THE CONTROLLER OF HER MAJESTY'S STATIONERY OFFICE. CROWN COPYRIGHT ORDNANCE SURVEY ©. BLUESKY INTERNATIONAL LTD ©. NATIONAL GRID ELECTRICITY - 100024241.

Issue	Date	Remarks	Drawn	Checked	Approved
A	01/11/2022	FOR DCO SUBMISSION	JDH	SF	EMD

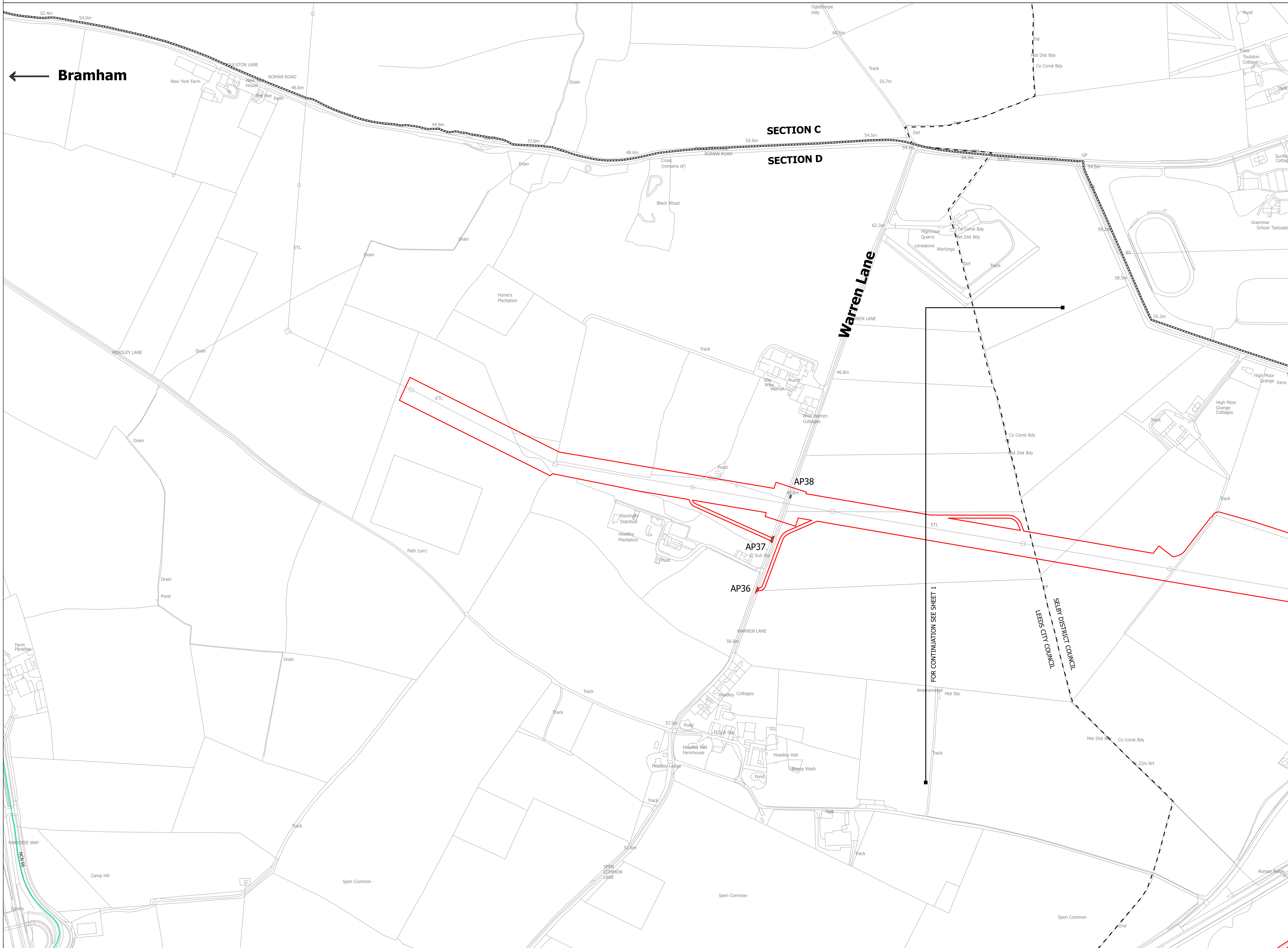
Title

NATIONAL GRID
(YORKSHIRE GREEN ENERGY ENABLEMENT PROJECT) ORDER
ACCESS, RIGHTS OF WAY AND PUBLIC RIGHTS OF NAVIGATION PLAN
REGULATION 5(2)(K)
SECTION D, SHEET 1 OF 2

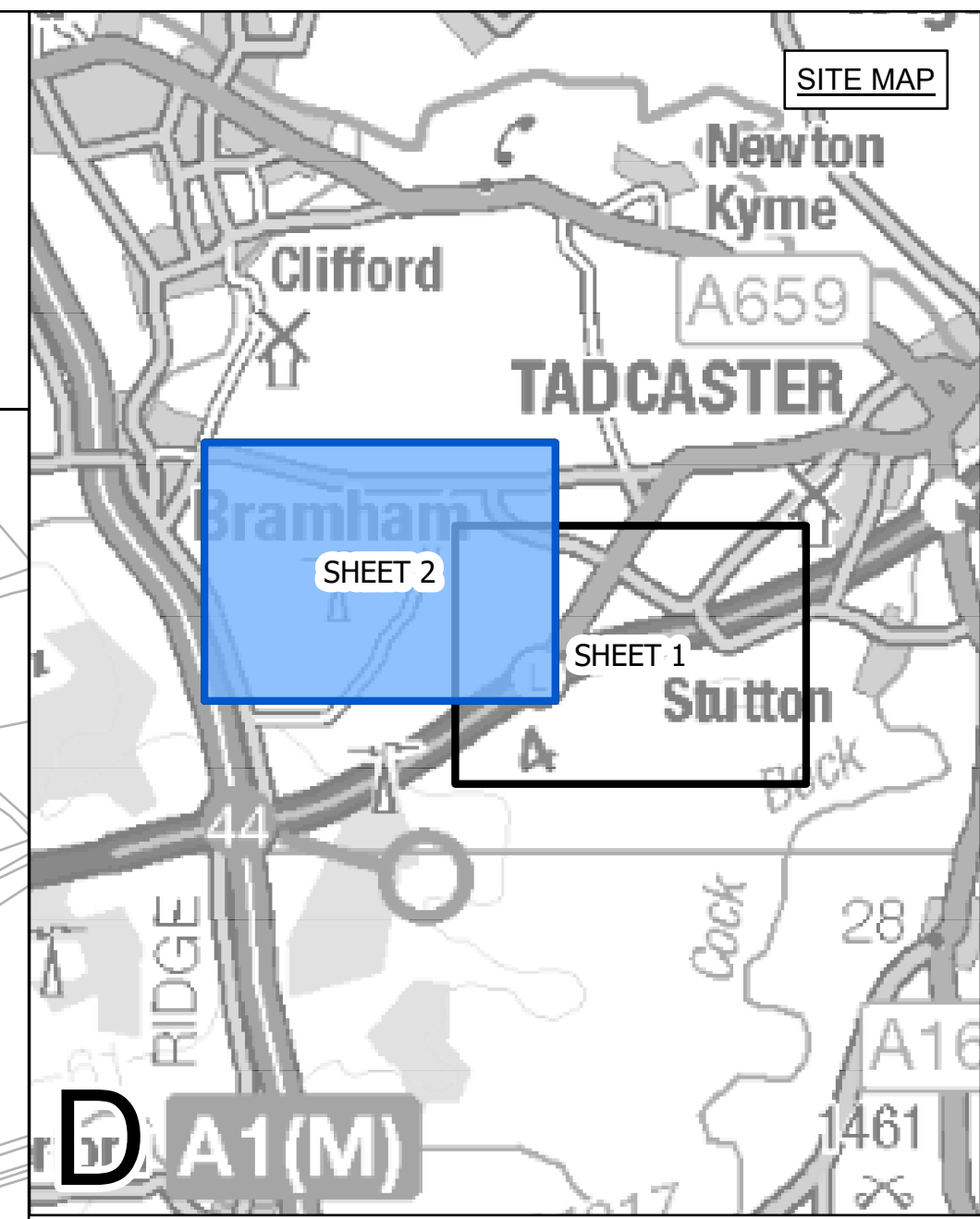
nationalgrid			
Application Number	EN020024		
National Grid Drawing Reference	DCO_D/AC/PS/01		
Scale	Sheet Size	Sheet	Issue
1:2,500	A0	SHEET 1 OF 2	A



NATIONAL GRID (YORKSHIRE GREEN ENERGY ENABLEMENT PROJECT) ORDER
ACCESS, RIGHTS OF WAY AND PUBLIC RIGHTS OF NAVIGATION PLAN
REGULATION 5(2)(K)
SECTION D, SHEET 2 OF 2



← Bramham



- LEGEND**
- LOCAL AUTHORITY BOUNDARY
 - - - SECTION BOUNDARY
 - ▭ ORDER LIMITS
 - ▭ ACCESS POINT (WITH ACCOMPANYING ID REFERENCE E.G. AP1)
 - ▭ NATIONAL CYCLE NETWORK (WITH ACCOMPANYING ID REFERENCE E.G. NCN 15)
 - ▭ PUBLIC RIGHTS OF WAY MANAGEMENT
 - ▭ UNAFFECTED PUBLIC RIGHT OF WAY (WITH FOOTPATH REFERENCE E.G. 10.123/1/2)
 - ▭ TEMPORARY STOPPED UP (MANAGED)
 - ▭ EXAMPLE REFERENCE FOR TEMPORARY STOPPED UP (MANAGED) SECTION OF RIGHT OF WAY

Notes

This drawing is scaled at paper size A0, therefore any prints taken at smaller sizes will affect accuracy of the measurement units and should not be scaled against.

For additional detail on the plan suites, please refer to Document 2.3 Plan Guidance Document, located in Volume 2 of the DCO Application.

The local authorities' boundaries and titles are correct at the time of submission. North Yorkshire County Council and its 7 districts are expected to form a new single council (North Yorkshire Council) on 1 April 2023.

Coordinate System: British National Grid
Sheet X Centroid Coordinate: 442046 Sheet Y Centroid Coordinate: 444312



BACKGROUND MAPPING INFORMATION HAS BEEN REPRODUCED FROM THE ORDNANCE SURVEY BY PERMISSION OF ORDNANCE SURVEY OF THE CONTROLLER OF HER MAJESTY'S STATIONERY OFFICE. CROWN COPYRIGHT ORDNANCE SURVEY ©. BLUESKY INTERNATIONAL LTD ©. NATIONAL GRID ELECTRICITY - 100024241.

Issue	Date	Remarks	Drawn	Checked	Approved
A	01/11/2022	FOR DCO SUBMISSION	JDH	SF	EMD

Title

NATIONAL GRID
(YORKSHIRE GREEN ENERGY ENABLEMENT PROJECT) ORDER
ACCESS, RIGHTS OF WAY AND PUBLIC RIGHTS OF NAVIGATION PLAN
REGULATION 5(2)(K)
SECTION D, SHEET 2 OF 2



Application Number: EN020024

National Grid Drawing Reference: DCO_D/AC/PS/02

Scale	Sheet Size	Sheet	Issue
1:2,500	A0	SHEET 2 OF 2	A